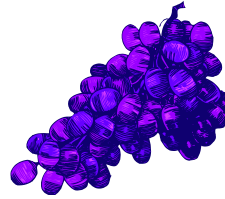




Along

JULY 2008

*The
Grapevine*



2101 E. Earhart Ave., Ste. 200
Stockton CA 95206-3924

<http://cesanjoaquin.ucdavis.edu/>

Telephone (209) 953-6100

FAX (209) 953-6128

COST STUDY 2008

Crush District 11 (Lodi Winegrape Commission)

<p><i>When:</i></p> <p>Wednesday, August 13, 2008 3:00 p.m. – 4:30 p.m.</p>	<p><i>Where:</i></p> <p>Calaveras Room in the New San Joaquin County Agricultural Center 2101 East Earhart Avenue, Stockton CA (southeast of the intersection @ Arch Airport Road and B Street)</p>
<p>3:00 – 3:05 p.m.</p>	<p>Introduction and Review <i>Paul S. Verdegaal, Farm Advisor</i></p>
<p>3:05 – 4:05 p.m.</p>	<p>LDGGA Update of Efforts and Concerns <i>Kyle Lerner, President, Lodi District Grape Growers Association</i></p>
<p>4:05 – 4:30 p.m.</p>	<p>Questions Answered <i>Dr. Karen Klonsky, Cooperative Extension Specialist, UC Davis Agricultural & Resource Economics</i></p>

Paul S. Verdegaal, Farm Advisor

1 Hour Continuing Education
has been requested from
California Certified Crop Adviser
program



UNIVERSITY of CALIFORNIA
Agriculture & Natural Resources
Cooperative Extension ♦ San Joaquin County
2101 East Earhart Avenue, Suite 200
Stockton, CA 95206-3924

Non-Profit Org.
US Postage
PAID
Stockton CA
Permit No. 2

COST STUDY 2008
Crush District 11 (Lodi Winegrape Commission)
Wednesday, August 13, 2008



At the new
San Joaquin County Agricultural Center
2101 East Earhart Avenue, Suite 200, Stockton CA 95206-3924
Telephone (209) 953-6100

The University of California prohibits discrimination against or harassment of any person on the basis of race, color, national origin, religion, sex, physical or mental disability, medical condition (cancer-related or genetic characteristics), ancestry, marital status, age, sexual orientation, citizenship, or status as a covered veteran (special disabled veteran, Vietnam-era veteran or any other veteran who served on active duty during a war or in a campaign or expedition for which a campaign badge has been authorized). University Policy is intended to be consistent with the provisions of applicable State and Federal laws. Inquiries regarding the University's nondiscrimination policies may be directed to the Affirmative Action/Staff Personnel Services Director, University of California, Agriculture and

Natural Resources,

1111 Franklin, 6th Floor, Oakland, CA 94607-5200 (510) 987-0096.

Cooperative Extension Work in Agriculture and Home Economics, U.S. Department of Agriculture,
University of California and San Joaquin County Cooperating

For assistance regarding our programs, please contact us.